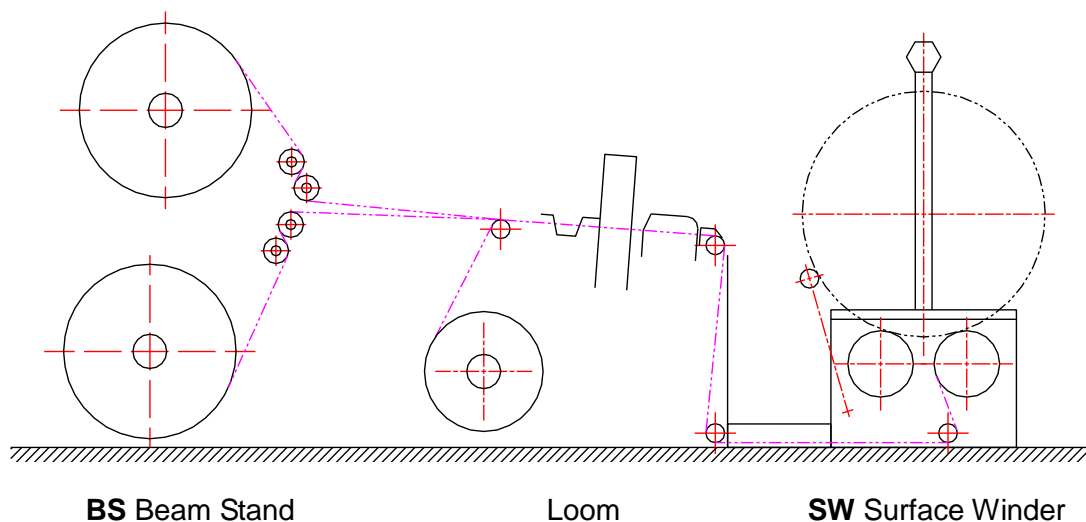


BS1 Beam Stand

BS1 Beam Stand is weaving let-off system out of weaving machine. It works synchronous to weaving machine, forming double-beams or multiple beams weaving application in order to weave special fabric or very heavy fabric. It's possible to set weaving tension individually for each beam, and to get particular fabric effect, or extending weaving time and improve weaving efficiency.

BS1 Beam Stand with advanced control technology is manufactured by subsidiary company of Beijing ORIT ---- Changzhou ORIT_RS Co. LTD. It takes use of world famous AC servo-system ERGODRIVE, digital setting weaving tension, control accuracy, advanced technology and perfect function.

The basic configuration can be:



BS1 characteristics and advantages:

- 1、 AC brushless motor servo-system, warp tension control accuracy, automatically synchronous to weaving machine. Available fit to all kind of looms.
- 2、 Convenient operation; Flexible setting warp tension according to different fabric .
- 3、 Different design, fit different customer requirement. Such as module frame design which can be forming Single beam weaving and Twin-beam weaving, wall-style single beam design and multiple beams design.
- 4、 Easy changing warp beam; and flexible configuration;

5、Series design to fit different width weaving machine, such as NW: 200cm, 230cm, 250cm, 320cm...

6、Suitable for different beam flange diameters:

Type A : Beam flange dia. $\Phi 800\sim\Phi 1016$

Type B : Beam flange dia. $\Phi 1100$

Type C : Beam flange dia. $\Phi 1250$



BS1 series design can fit the demand of technical fabric, decoration and art fabric. Improve the weaving efficiency and extend the weaving range.

Can be:

Upgrading and installed in the existing weaving machine;

Work with new weaving machine;

BS1/D-320/ $\Phi 1100$ work with Dornier rapier loom

7、 Type: BS1 / S – 250 / $\Phi 1000$

